

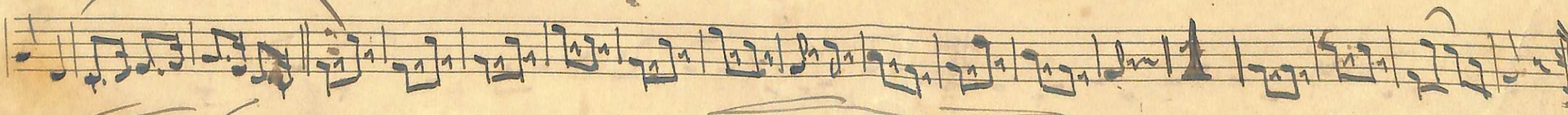
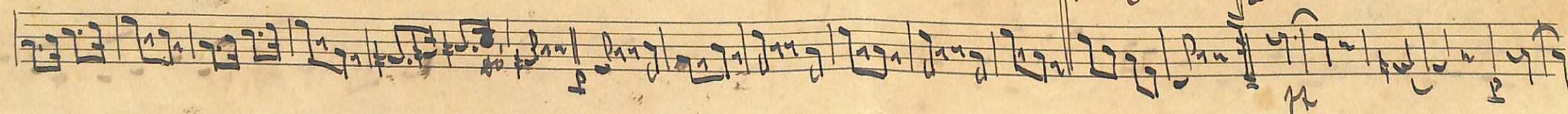
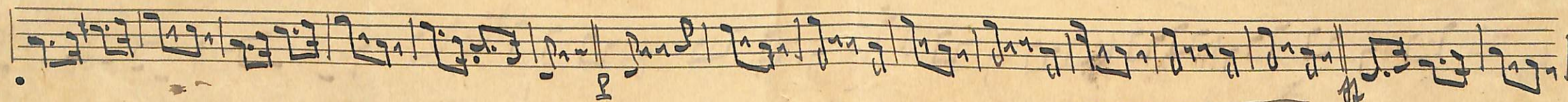
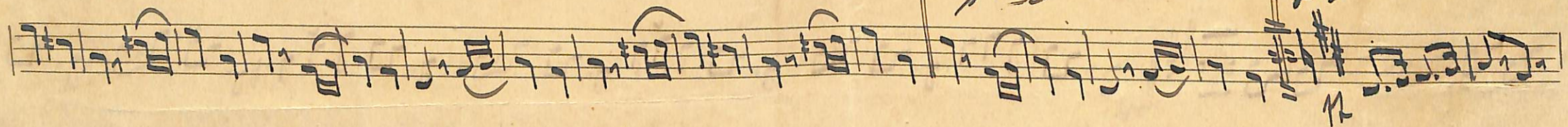
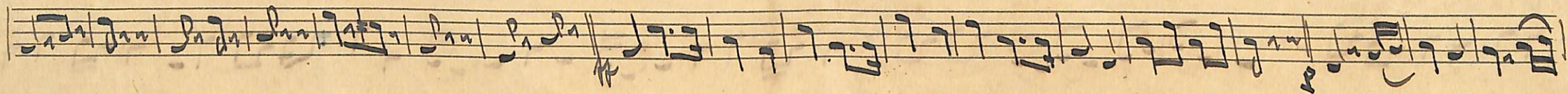
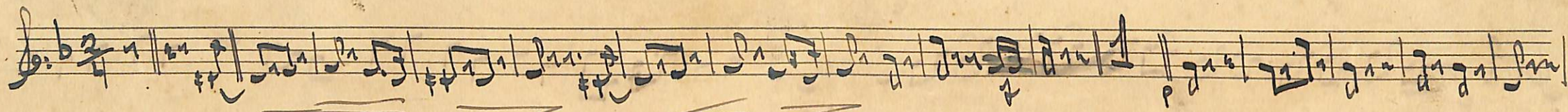
"BAHIANO"

Obrado n.º 18 de W. da Paixão = 1.º Clarinete si

BAHIANO =

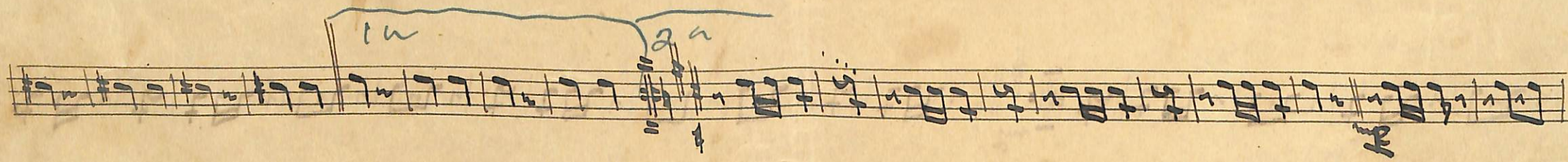
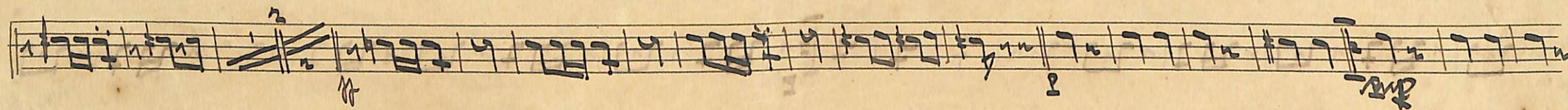
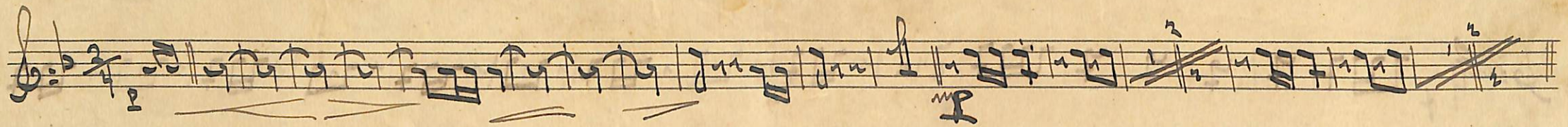
Ob. n.º 18 de W. da Paizão =

S. Barytono am



Bahiano

Sobrado nº 18 de W. da Paixão - 1ª Imprensa



BANIANO

Obraas n.º 18 de W. A. Mozart / 1.º Tombo ou só

Handwritten musical notation on a single staff, featuring a treble clef, a key signature of one flat (B-flat), and a 2/4 time signature. The notation includes various rhythmic values such as eighth and sixteenth notes, along with rests and dynamic markings like 'p' (piano) and 'solo'.

Handwritten musical notation on a single staff, continuing the piece with similar rhythmic patterns and dynamic markings. A 'solo' marking is present at the beginning of the staff.

Handwritten musical notation on a single staff, showing a continuation of the melodic line with consistent rhythmic structure.

Handwritten musical notation on a single staff, featuring a section with a bracketed '1.º' marking above it, indicating a first ending or a specific performance instruction.

Handwritten musical notation on a single staff, including a section with a bracketed '2.º' marking above it, indicating a second ending.

Handwritten musical notation on a single staff, featuring a section with a bracketed '3.º' marking above it, indicating a third ending.

Handwritten musical notation on a single staff, showing the continuation of the piece with various rhythmic and melodic elements.

Handwritten musical notation on a single staff, concluding the piece with a final cadence and a double bar line.

=BAHIANO=

Sobrado n.º 18 de Waldemar da Paixão

de Pistons

