

CLARINETTA; INFERNAL (Solo) 10 Clarineta; Sib

Handwritten musical score for Clarinet Solo, titled "CLARINETTA; INFERNAL (Solo) 10 Clarineta; Sib". The score consists of eight staves of music. The first staff begins with a treble clef, a key signature of one flat (B-flat), and a 3/4 time signature. The music is written in a single melodic line. The score includes various musical notations such as eighth and sixteenth notes, rests, and dynamic markings. A large bracket spans across the second and third staves, indicating a section. The piece concludes with a double bar line and the marking "FFF" (fortissimo) at the bottom right. The paper is aged and shows some staining and a small tear on the right side.

S. ALTO

*Inta*

*Voz*

A handwritten musical score for Soprano Alto, consisting of ten staves of music. The notation includes treble clefs, a key signature of two sharps (F# and C#), and a 2/4 time signature. The music features various note values, including quarter, eighth, and sixteenth notes, as well as rests and ties. There are several annotations: a circled 'Inta' at the beginning, a 'Voz' marking near the top right, and 'lata #' markings on the sixth and seventh staves. A large blue scribble is present over the middle staves. The paper shows signs of age and wear, with some ink smudges and a dark mark at the bottom center.

Al. Al.

Clarinete Infernal  
Gravoso e Lento

Op. 40 Tenor  
Sonnet  
reciter com Porto ename  
no clarinete

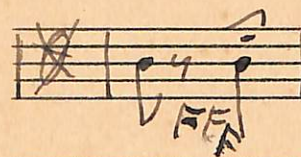
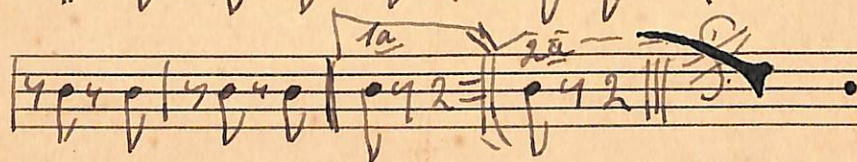
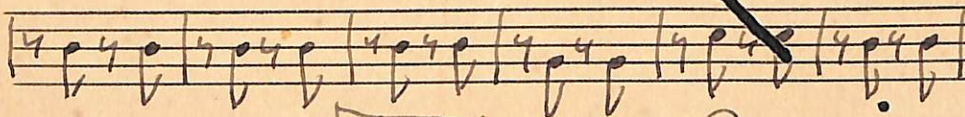
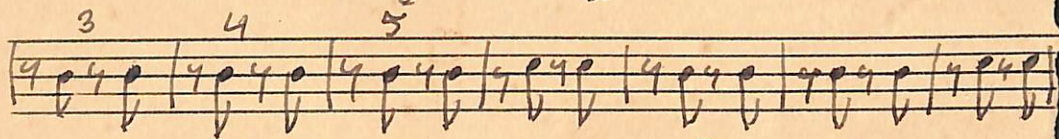
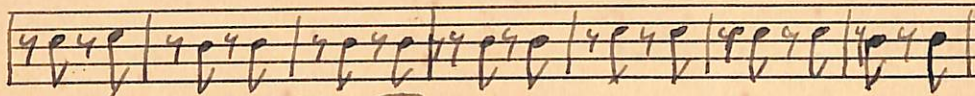
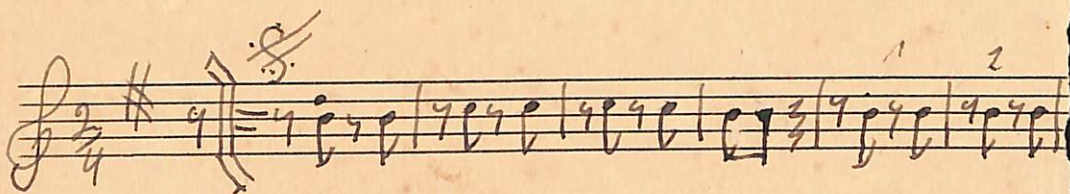
Opus 40 f. v. s.

# Clarineta Ungherul

Handwritten musical score for Clarinet Ungherul. The score is written on six staves. The first staff begins with a treble clef, a key signature of one sharp (F#), and a time signature of 2/4. The music consists of eighth and sixteenth notes, with various fingerings indicated by numbers 1-5. A double bar line is present after the second measure. The second staff continues the melody with similar notation and fingerings. The third staff features a measure with a circled '1a' and a slur over two notes. The fourth staff has a measure with a circled '5' and a measure with a circled '1 2 3' and a diagonal slash through it. The fifth staff includes a measure with a circled '1 2 - 2' and a measure with a circled '1a'. The sixth staff begins with a circled 'FFF' dynamic marking. The score concludes with a double bar line and a fermata over the final note. A large, dark, irregular mark is present on the right side of the page, overlapping the fifth and sixth staves.

Clarinetta Bassonal

2<sup>a</sup> Trompa



"CLARINETE INFERNAL" 2º Trombone  
GRAVAÇÃO FREVO DE LOURIVAL OLIVEIRA  
VICTÔR, Com PAULO MOURA AO CLARINETE

Handwritten musical score for the 2nd Trombone part of "Clarinete Infernal". The score is written on six staves. The first staff begins with a treble clef, a key signature of one flat (B-flat), and a 2/4 time signature. The music features a series of eighth and sixteenth notes, often beamed together, with various dynamics such as *ff* and *fff*. The second staff continues the melodic line with similar rhythmic patterns. The third staff shows a change in dynamics and includes some rests. The fourth staff features a series of notes with a *ff* dynamic. The fifth staff continues the melodic development. The sixth staff concludes the piece with a final chord and a *fff* dynamic. The score is marked with various performance instructions and includes a large, dark scribble at the end of the sixth staff.



Clarineta Imperial Frenca

Allegretto 4/4

Handwritten musical score for Clarinet in F major, 4/4 time, titled "Clarineta Imperial Frenca". The score is written on ten staves. The first staff begins with a treble clef, a key signature of one sharp (F#), and a 4/4 time signature. The music consists of a single melodic line. The notation includes various note values (quarter, eighth, and sixteenth notes), rests, and slurs. There are several dynamic markings, including "f" (forte) and "fff" (fortissimo), and articulation marks such as accents and slurs. The score concludes with a double bar line and repeat dots. The paper shows signs of age, including a large blue ink scribble at the bottom left and a dark ink smudge at the bottom center.



