

As Pastorinhas = marcha = 5. Alto = Taldi

As Pastorinhas = marcha = 5. Tenor = bruto

Handwritten musical notation on a five-line staff, beginning with a treble clef and a 2/4 time signature. The music consists of a series of eighth and sixteenth notes. A dynamic marking 'f' is placed below the staff.

Second line of handwritten musical notation, continuing the melody with eighth and sixteenth notes.

Third line of handwritten musical notation, starting with the word 'Final' and a sharp sign (#) above the staff.

Fourth line of handwritten musical notation, continuing the melodic line.

Fifth line of handwritten musical notation, continuing the melodic line.

Sixth line of handwritten musical notation, continuing the melodic line.

Seventh line of handwritten musical notation, continuing the melodic line.

Eighth line of handwritten musical notation, starting with the word 'Solo' and a sharp sign (#) above the staff. It includes various musical markings and a final cadence.

Fm

as Pastorinhas - marcha 2^a Feis mi b

Final ♯

bale ♯

Fim

Fim

As Partonikas = marcha = 3^a genus mi b

Musical notation on a single staff. It begins with a treble clef, a key signature of one flat (B-flat), and a 2/4 time signature. The first measure contains a whole note chord with a sharp sign above it and a forte 'f' dynamic marking below it. The rest of the staff contains a series of eighth notes.

Musical notation on a single staff. It begins with a treble clef and a key signature of one sharp (F-sharp). The word "Final" is written above the staff, followed by a sharp sign. The staff contains a series of eighth notes.

Musical notation on a single staff. It begins with a treble clef and a key signature of one sharp (F-sharp). The staff contains a series of eighth notes, with some notes marked with numbers 2, 3, 4, 5, 6, 2, 3, 4, 5 above them.

Musical notation on a single staff. It begins with a treble clef and a key signature of one sharp (F-sharp). The staff contains a series of eighth notes, with some notes marked with numbers 2, 3 above them.

Musical notation on a single staff. It begins with a treble clef and a key signature of one sharp (F-sharp). The staff contains a series of eighth notes.

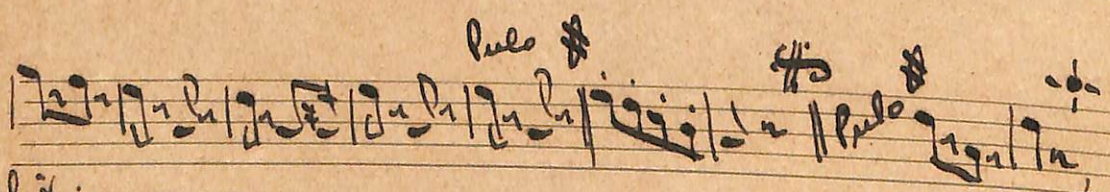
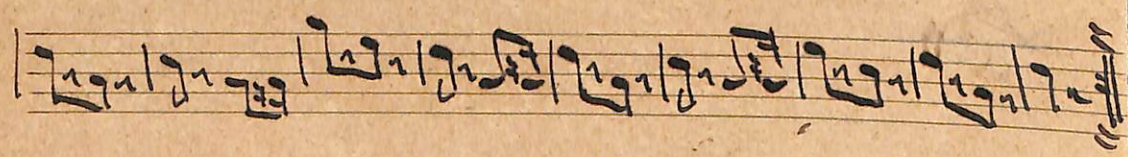
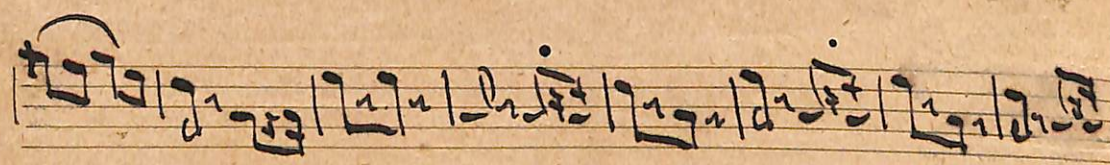
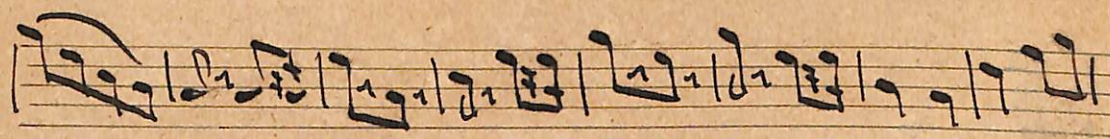
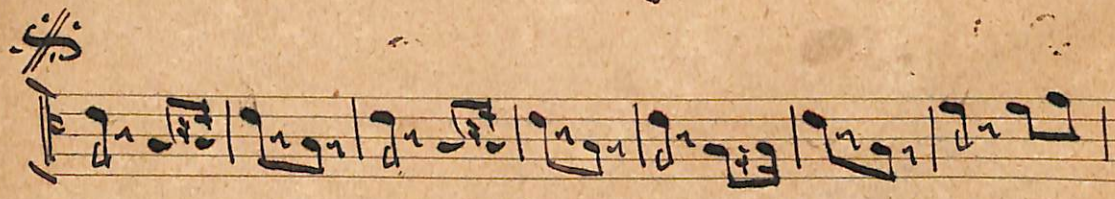
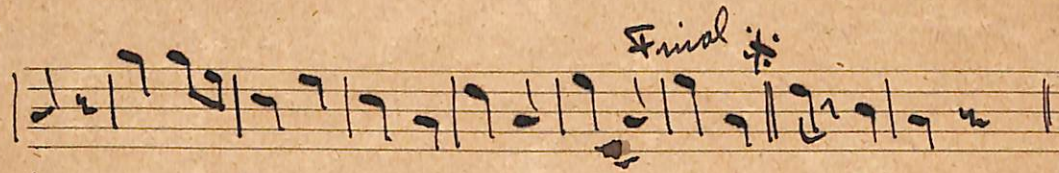
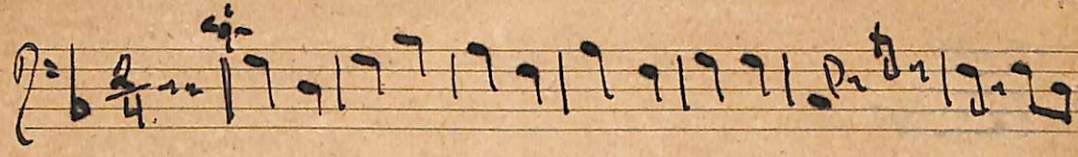
Musical notation on a single staff. It begins with a treble clef and a key signature of one sharp (F-sharp). The staff contains a series of eighth notes, with a double bar line and repeat sign in the middle.

Musical notation on a single staff. It begins with a treble clef and a key signature of one sharp (F-sharp). The word "Solo" is written above the staff, followed by a sharp sign. The staff contains a series of eighth notes.

Musical notation on a single staff. It begins with a treble clef and a key signature of one sharp (F-sharp). The word "Final" is written above the staff, followed by a sharp sign. The staff contains a series of eighth notes, ending with a wavy line.

As Pastorinhas = Marcha = Bombardino

As Pastorinhas - marcha - Falsa mi b



Os Partimbas - marcha - Finta si b

Fu