

Marcha Santa Cecilia S. Fern

Handwritten musical score for a march. The score is written on ten staves. The first staff begins with a treble clef, a common time signature (C), and a dynamic marking of *f*. The music consists of a series of rhythmic patterns, including eighth and sixteenth notes, and rests. There are several dynamic markings throughout, including *mf* and *f*. The score concludes with a double bar line and the word *Fine*. The paper is aged and shows signs of wear, including a large tear on the right edge.

de Buenos de 1709

Two empty musical staves at the bottom of the page.

Marcha S. Cecilia 2º Baritone

This page contains a handwritten musical score for the 2nd Baritone part of a march titled "Marcha S. Cecilia". The score is written on ten staves. The first staff begins with a treble clef, a common time signature (C), and a key signature of one flat (B-flat). The music is characterized by a rhythmic pattern of eighth and sixteenth notes, with frequent rests. The notation includes various musical symbols such as slurs, accents, and dynamic markings. A "Fin" marking is present on the seventh staff, followed by a "Trio" section indicated by a box on the eighth staff. The score concludes with a double bar line and a final flourish on the tenth staff.

Handwritten musical score for 2º Baritone, titled "Marcha S. Cecilia". The score is written on ten staves, featuring treble clef, common time signature, and a key signature of one flat. The notation includes various musical symbols such as slurs, accents, and dynamic markings (e.g., *mf*, *pp*). The piece concludes with a "Fin" marking and a "Trio" section indicated by a box on the eighth staff.

Marcha Santa Cecilia 1^o Trompa

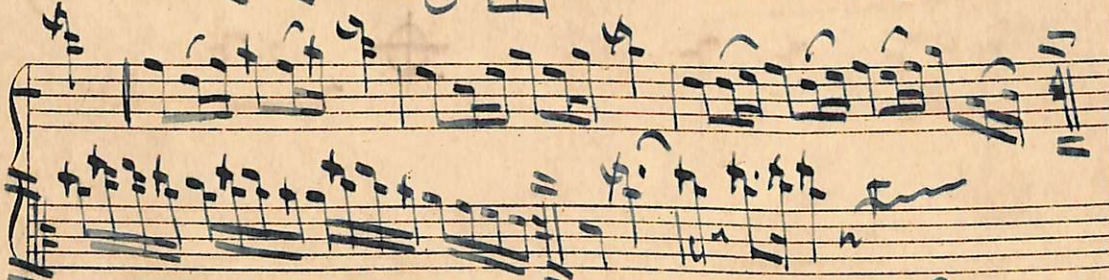
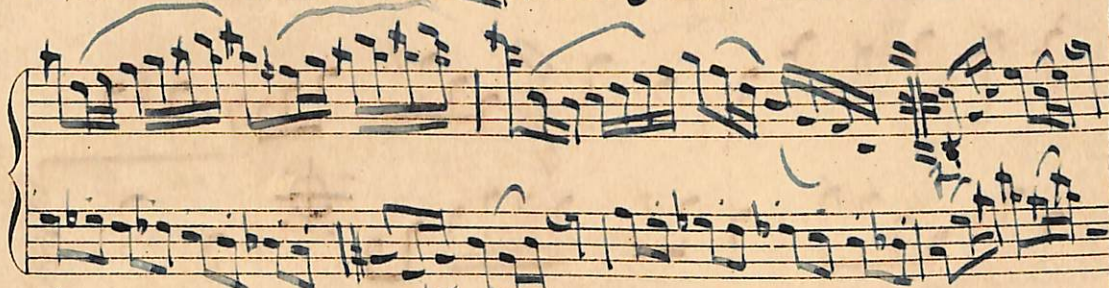
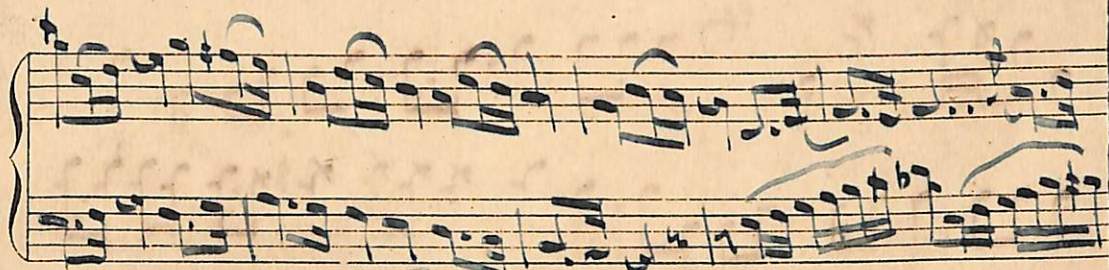
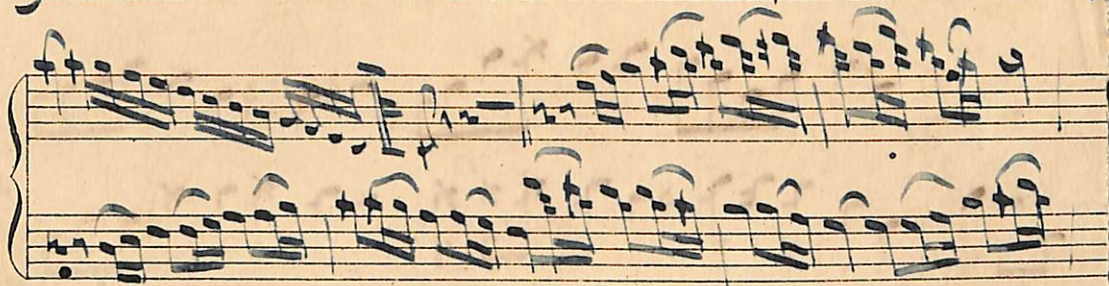
Handwritten musical score for 1st Trumpet. The score is written on ten staves. The first staff begins with a treble clef, a key signature of one sharp (F#), and a common time signature (C). The music consists of rhythmic patterns, primarily eighth and sixteenth notes, with various dynamics and articulations. A large 'S' is written above the first few notes. The second staff has a dynamic marking of *mf*. The third staff has a dynamic marking of *p*. The fourth staff has a dynamic marking of *pp*. The fifth staff has a dynamic marking of *pp*. The sixth staff has a dynamic marking of *pp*. The seventh staff has a dynamic marking of *pp*. The eighth staff has a dynamic marking of *pp*. The ninth staff has a dynamic marking of *pp*. The tenth staff has a dynamic marking of *pp*. The score ends with a double bar line and a final cadence. There are some corrections and markings throughout the score, including a large 'S' at the beginning and a 'Finis' at the end.

Marcha Santa Cecilia 1º Tromba

A handwritten musical score for the 1st Trombone part of a march. The score is written on ten staves. The first staff begins with a treble clef, a common time signature (C), and a key signature of one sharp (F#). The music consists of a series of rhythmic patterns, including eighth and sixteenth notes, and rests. The notation is dense and characteristic of 19th-century manuscript notation. The paper shows signs of age, with some staining and foxing.

partitura de Jose Carneiro Ribeiro

Marcha = 5.^{ta} Cecilia - 1.^o Clarineta si



And

Marcha Junta biclia Contra Basso ^{SW}

A handwritten musical score on aged paper, consisting of ten staves of music. The title at the top is "Marcha Junta biclia Contra Basso" with a small "SW" in the upper right corner. The music is written in a single system across the staves. The first staff begins with a treble clef, a common time signature (C), and a key signature of one sharp (F#). The notation includes various rhythmic values such as eighth and sixteenth notes, often beamed together, and rests. There are several dynamic markings, including accents (z) and a piano (p) marking. A section of the music is marked "Trio" above the staff, which begins with a change in key signature to one flat (Bb) and a change in time signature to 2/2. The score concludes with a double bar line and repeat signs.

Marcha S. Cecilia Parçada

Handwritten musical score for "Marcha S. Cecilia Parçada". The score is written on six staves. The first staff begins with a treble clef, a common time signature (C), and a key signature of one sharp (F#). The music is written in a rhythmic, march-like style. The second staff contains a circled section with the word "Bis" written above it. The third staff includes the word "Bombo do" written below the notes. The fourth and fifth staves continue the melodic and rhythmic development. The sixth staff features the word "Fino" written above the notes. The score concludes with a double bar line and repeat signs.

Marcha S. Cecilia da Sociedade

Handwritten musical score for 'Marcha S. Cecilia da Sociedade'. The score is written on ten staves. The first staff is a treble clef with a common time signature (C). The key signature has one sharp (F#). The music consists of a series of rhythmic patterns, including eighth and sixteenth notes, and rests. There are several measures with double bar lines and repeat signs. The notation includes various accidentals (sharps) and dynamic markings. The score ends with a double bar line and a repeat sign.

Marcha Lenta Cecilia

Basson en do

Impr. Lino Fassa Favor di trovar
a parte An. 2^o