

# BAIXA DO SAPATEIRO 2º S. A/T

Handwritten musical notation on a single staff, featuring a treble clef, a key signature of two sharps (F# and C#), and a 2/4 time signature. The notation includes quarter notes, eighth notes, and sixteenth notes, with various accidentals and slurs.

Handwritten musical notation on a single staff, continuing the piece. It includes a dynamic marking 'p' (piano) and a fermata over a note.

Handwritten musical notation on a single staff, featuring a key signature change to one sharp (F#) and a 2/4 time signature. It includes a dynamic marking 'p' and a fermata.

Handwritten musical notation on a single staff, starting with a dynamic marking 'p' and a fermata. It includes a key signature change to one sharp (F#) and a 2/4 time signature.

Handwritten musical notation on a single staff, featuring a key signature change to one sharp (F#) and a 2/4 time signature. It includes a dynamic marking 'p' and a fermata.

Handwritten musical notation on a single staff, featuring a key signature change to one sharp (F#) and a 2/4 time signature. It includes a dynamic marking 'p' and a fermata.

Handwritten musical notation on a single staff, featuring a key signature change to one sharp (F#) and a 2/4 time signature. It includes a dynamic marking 'p' and a fermata.

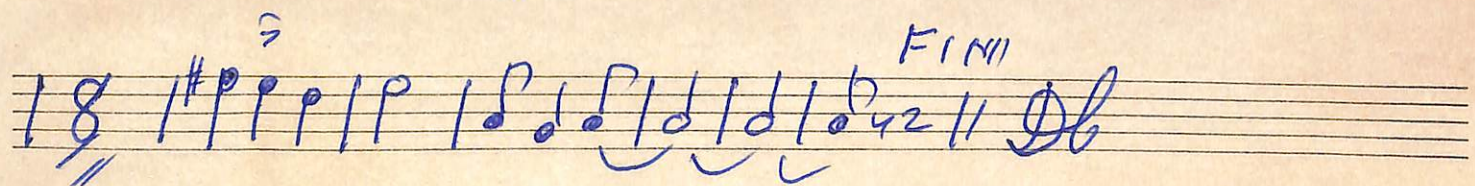
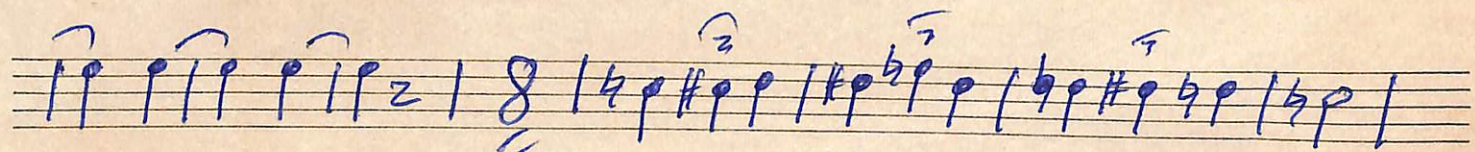
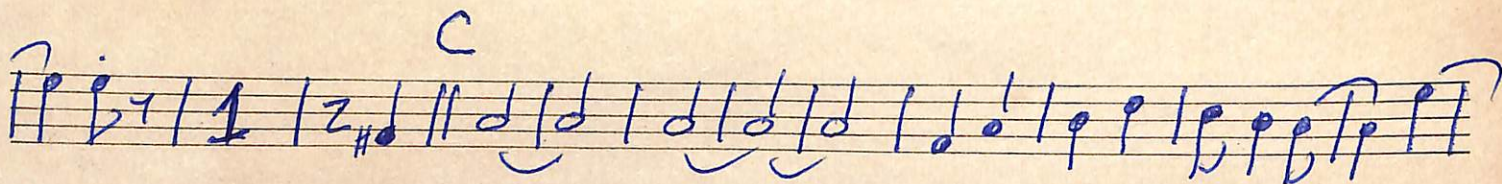
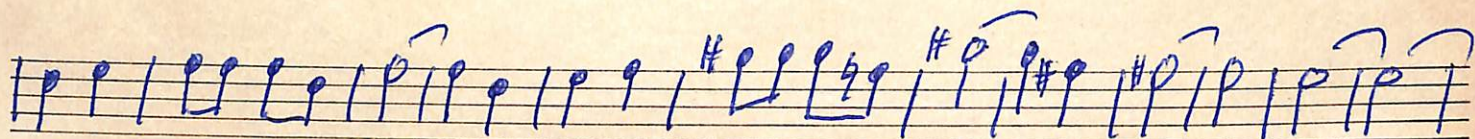
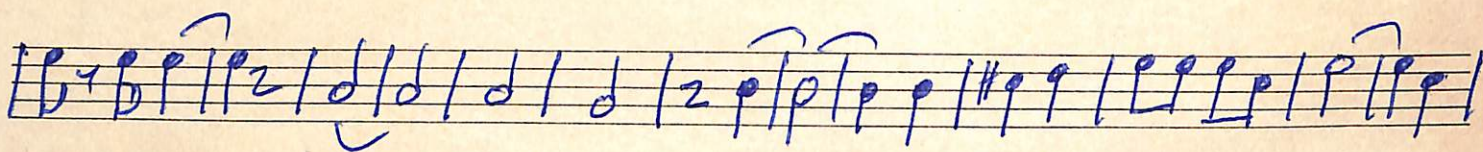
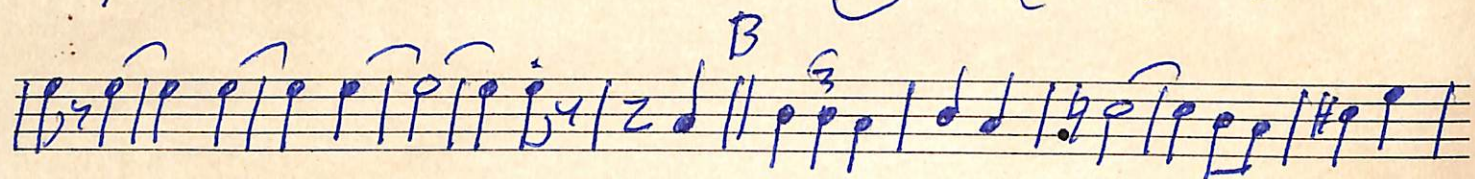
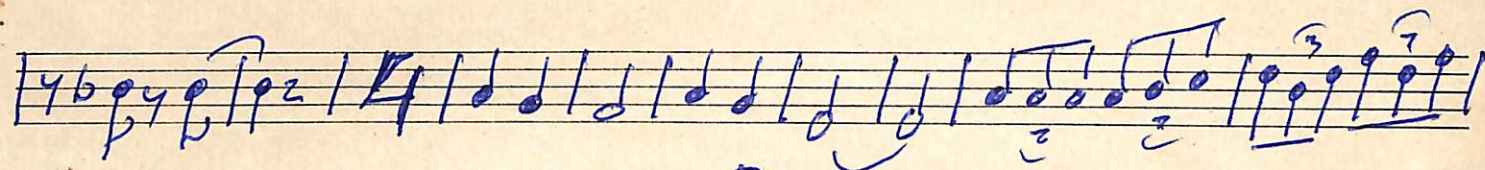
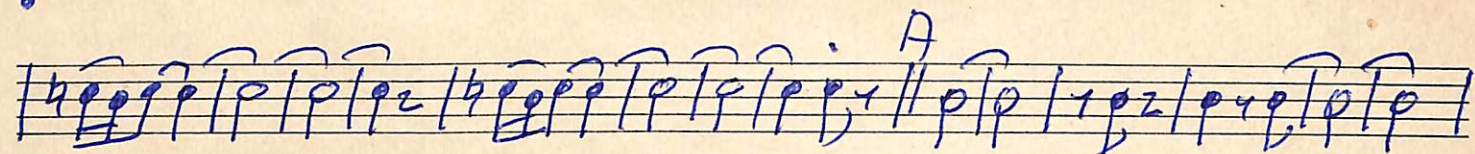
Handwritten musical notation on a single staff, featuring a key signature change to one sharp (F#) and a 2/4 time signature. It includes a dynamic marking 'p' and a fermata.

Handwritten musical notation on a single staff, featuring a key signature change to one sharp (F#) and a 2/4 time signature. It includes a dynamic marking 'p' and a fermata.



BAIVA DO SAPATEIROS

2º TROMBONE Sib e PISTON





# NA BAIXA DO SAPATEIRO BOMBARDINO

This is a handwritten musical score for a Bombardino, a traditional Brazilian instrument. The piece is titled "NA BAIXA DO SAPATEIRO BOMBARDINO" and is written in 2/4 time. The score consists of 12 staves of music. The notation includes quarter notes, eighth notes, and sixteenth notes, often with grace notes and slurs. There are several dynamic markings, including a forte (f) marking in the second staff and a piano (p) marking in the third staff. A section marked with a 'B' (Basso) begins in the fifth staff. The key signature is one flat (B-flat major or D minor). The piece concludes with a double bar line and a final chord in the twelfth staff.



f

