

Dobrado:

Requinta $\text{G } \frac{6}{8}$

Handwritten musical score for Requinta in G major, 6/8 time. The score consists of ten staves of music. The first staff begins with a treble clef, a key signature of one sharp (F#), and a 6/8 time signature. The music is written in a single melodic line. The notation includes various note values (quarter, eighth, and sixteenth notes), rests, and phrasing slurs. There are several annotations in red ink: a circled 'u' below the first staff, a circled 'd' above the fourth staff, and a circled 'pp' at the beginning of the fifth staff. The paper shows signs of age, including stains and a tear on the right edge.

Dobrado:

Clarineta

Handwritten musical score for Clarinet in B-flat, 2/8 time signature. The score consists of 10 staves of music. The first staff is labeled "Clarineta" and has a red circled "H" below it. The music is written in blue ink with various notes, rests, and articulation marks. There are several red circled annotations: a "4" on the 2nd staff, a "+" on the 5th staff, a "4" on the 6th staff, a "7" on the 7th staff, a "+" on the 8th staff, and a "4" on the 10th staff. The score ends with a double bar line and repeat signs on the 10th staff.

DOBRA DO

1^a CLARINETA

Handwritten musical score for Clarinet 1, titled "DOBRA DO". The score is written on ten staves. It begins with a treble clef, a key signature of one flat (Bb), and a 6/8 time signature. The music is characterized by a steady eighth-note rhythm. The notation includes various dynamics such as "f" (forte), "pp" (pianissimo), and "ff" (fortissimo), as well as articulation marks like accents and slurs. There are also some handwritten annotations in red ink, possibly indicating fingerings or performance techniques. The score concludes with a double bar line and a fermata over the final note.

Four empty musical staves at the bottom of the page.

DOBRA DO

2ª CLARINETA

Handwritten musical score for the 2nd Clarinet part of the piece 'DOBRA DO'. The score is written on ten staves. The first staff begins with a treble clef, a key signature of one sharp (F#), and a time signature of 6/8. The music is characterized by a rhythmic pattern of eighth and sixteenth notes, often beamed together. There are several dynamic markings, including 'p' (piano) and 'f' (forte), and some phrasing slurs. The score includes various musical notations such as accidentals, ties, and articulation marks. The piece concludes with a double bar line on the tenth staff.

Dobrado:

Sax. Alto $\frac{6}{8}$

4

1

2

d

Dobrado:

San Juan

1

2

3

4

5

Dobrado

2^o Trompa III

Handwritten musical notation on a single staff, starting with a treble clef, a 6/8 time signature, and a key signature of one sharp (F#). The notation includes various note values and rests.

Handwritten musical notation on a single staff, continuing the piece with various note values and rests.

Handwritten musical notation on a single staff, featuring a key signature change to two sharps (F# and C#) and some triplets.

Handwritten musical notation on a single staff, primarily consisting of vertical stems, possibly representing a bass line or a specific rhythmic pattern.

Handwritten musical notation on a single staff, starting with a key signature of two sharps (F# and C#) and a dynamic marking of *mf*.

Handwritten musical notation on a single staff, continuing the melodic line with various note values.

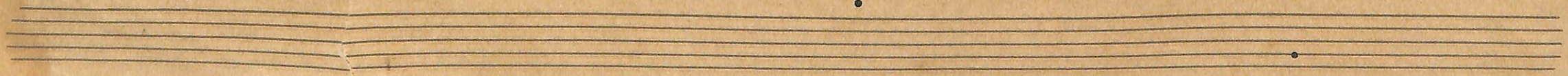
Handwritten musical notation on a single staff, concluding the piece with a double bar line and a signature.

Two empty musical staves at the bottom of the page.

Adagio

BOTTROMPA MIT

A handwritten musical score for a piece titled "BOTTROMPA MIT". The score is written on seven staves. The first staff begins with a treble clef, a 6/8 time signature, and a key signature of one sharp (F#). The music consists of a series of rhythmic patterns, primarily eighth and sixteenth notes, with some rests and dynamic markings such as "F" (forte). The notation includes various note values, stems, and beams. The score concludes with a double bar line and a stylized signature or flourish.



DOBRA DO

10 PISTON

The image shows a handwritten musical score for a piece titled "DOBRA DO" for "10 PISTON". The score is written on ten staves. The first staff begins with a treble clef, a key signature of one flat (B-flat), and a 6/8 time signature. The music is written in a rhythmic, dance-like style with many eighth and sixteenth notes. Dynamics such as *f* (forte) and *p* (piano) are used throughout. There are several first and second endings marked with "1a" and "2a" above the notes. The notation includes various note values, rests, and slurs. The handwriting is in blue ink on aged, slightly yellowed paper.

20 PISTON

Handwritten musical score for 20 PISTON, consisting of five staves of music. The notation includes notes, rests, and dynamic markings such as 'F' (forte). The first staff begins with a treble clef, a key signature of one flat (B-flat), and a time signature of 8/8. The music is written in a single melodic line. The second staff contains a measure with a '20' written above it, possibly indicating a measure number or a specific tempo marking. The third staff continues the melodic line. The fourth staff features a measure with a '20' written above it and a large '8' below it, which could be a measure number or a tempo marking. The fifth staff concludes the piece with a double bar line and a final note. The paper is aged and shows some staining.

Debrado

1^o TROMBONE

Handwritten musical score for 1st Trombone, titled "Debrado". The score is written on ten staves. The first staff begins with a treble clef, a key signature of two flats (B-flat and E-flat), and a 2/4 time signature. The music consists of eighth and sixteenth notes, with various accidentals and dynamic markings. The second staff uses a bass clef and includes a key signature change to one sharp (F#) and a 2/4 time signature. The third staff returns to the original key signature and time signature. The fourth and fifth staves continue the melodic line with eighth notes. The sixth staff features a key signature change to one sharp and a 2/4 time signature. The seventh staff returns to the original key signature and time signature. The eighth staff includes a key signature change to one sharp and a 2/4 time signature. The ninth staff returns to the original key signature and time signature. The tenth staff concludes the piece with a key signature change to one sharp and a 2/4 time signature, ending with a double bar line and a repeat sign.

Four empty musical staves, each consisting of five horizontal lines, positioned at the bottom of the page.

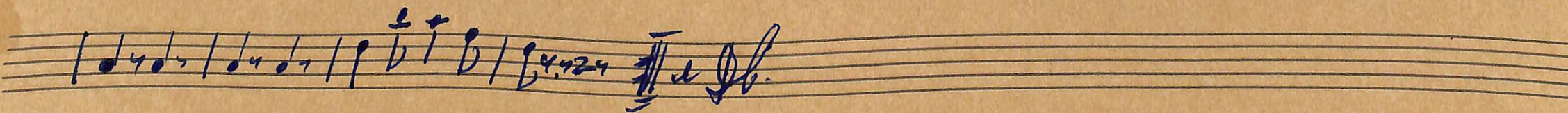
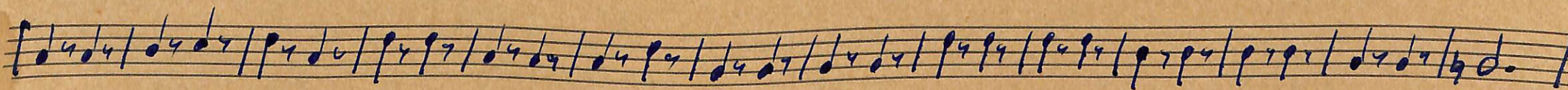
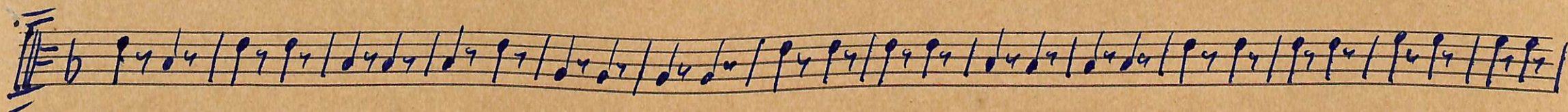
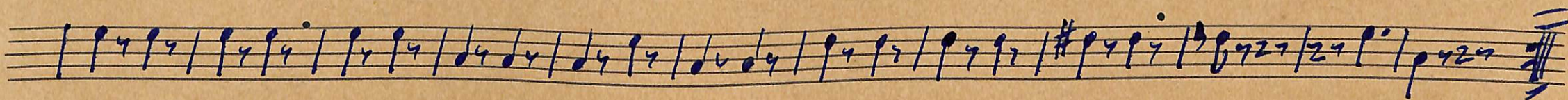
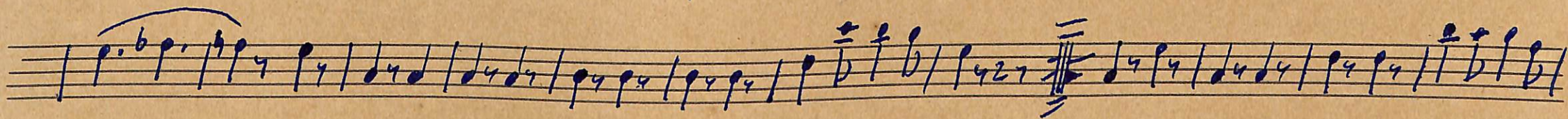
Adorado

JARAGUA
BOMBARDINO

Handwritten musical score for Bombardino, titled "Adorado". The score is written on ten staves. The first staff is in G major, 2/4 time, with a treble clef and a key signature of one sharp (F#). The second staff is in F major, 2/4 time, with a treble clef and a key signature of one flat (Bb). The third staff is in F major, 2/4 time, with a treble clef and a key signature of one flat (Bb). The fourth staff is in F major, 2/4 time, with a treble clef and a key signature of one flat (Bb). The fifth staff is in F major, 2/4 time, with a treble clef and a key signature of one flat (Bb). The sixth staff is in F major, 2/4 time, with a treble clef and a key signature of one flat (Bb). The seventh staff is in F major, 2/4 time, with a treble clef and a key signature of one flat (Bb). The eighth staff is in F major, 2/4 time, with a treble clef and a key signature of one flat (Bb). The ninth staff is in F major, 2/4 time, with a treble clef and a key signature of one flat (Bb). The tenth staff is in F major, 2/4 time, with a treble clef and a key signature of one flat (Bb). The score includes various musical notations such as notes, rests, accidentals, and dynamic markings like *p* and *lento*. There are also some handwritten annotations and corrections throughout the score.

Sobrado

Baixo MIB



DOBRAPO

CAIXA

p *e - m - e - - - - - do*

mp **30**

1a casa *2a casa*

f

p **30**

mp *14 -*

p

mp **14**

p *14*

mais

Fin

Bilmarca

14

mp

caixa de Torquato P. Santos

Dobrado

Bombo e Fruto

segue

2/8

segue

2/8

Trio

Marca

2/6

Dob.

Dobrado:

Gowbo e Srafos

2 3 4 5 6 7 8 9 10 11 12

13 14 15 2 3 4 5 6 7 8 9 10

11 12

TRIO

Marcha 26