

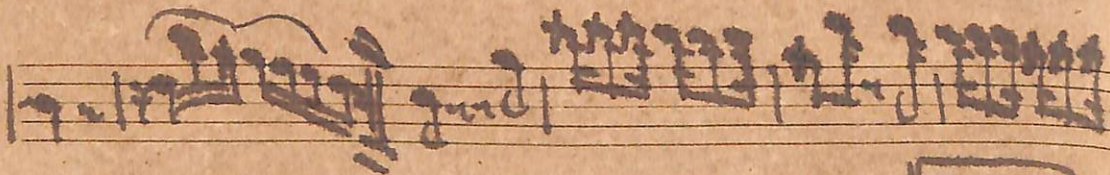
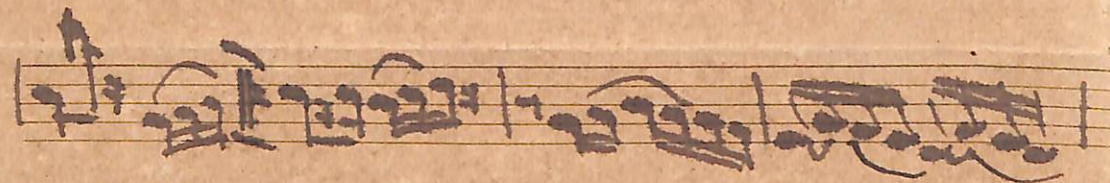
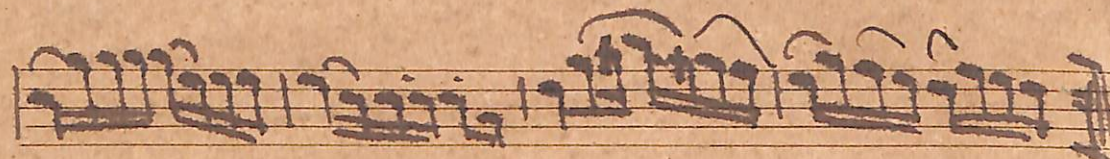
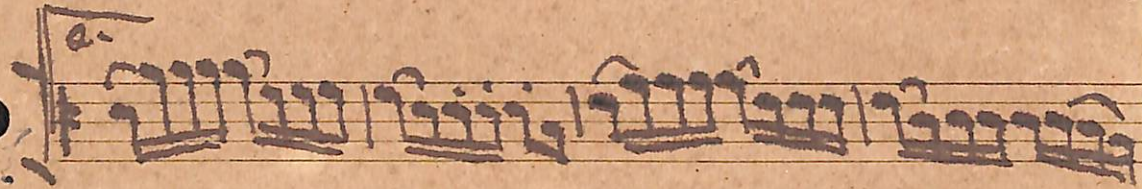
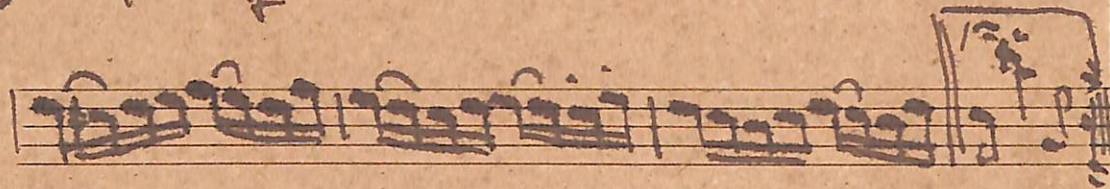
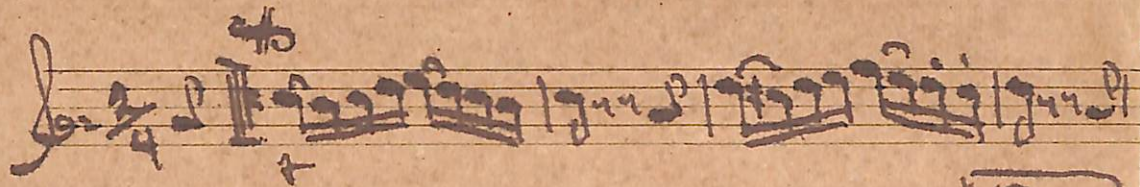
Bambo Pé = Trêvo = 1<sup>o</sup> Clarineta

Handwritten musical score for Clarinet 1, titled "Bambo Pé = Trêvo". The score is written on ten staves. The first staff begins with a treble clef, a key signature of one flat (B-flat), and a 4/4 time signature. The music consists of various rhythmic patterns, including eighth and sixteenth notes, and rests. There are several dynamic markings, including accents and slurs. The score concludes with a double bar line and the word "coda" written above the final notes. The paper is aged and shows some wear, including two hole punches on the left side.

Bambolé = Fêve = II<sup>o</sup> Clarineta

Handwritten musical score for Clarinet II, titled "Bambolé = Fêve = II<sup>o</sup> Clarineta". The score consists of eight staves of music. The first staff begins with a treble clef, a key signature of one sharp (F#), and a 4/4 time signature. The music is written in a style characteristic of Brazilian choro, featuring complex rhythmic patterns and melodic lines. The notation includes various note values, rests, and articulation marks. The second staff has a "4" written below it. The third staff has a "1" below it. The fourth staff has a "2" below it. The fifth staff has a "1" below it. The sixth staff has a "1" below it. The seventh staff has a "1" below it. The eighth staff has a "1" below it and ends with the word "coda" and a double bar line. The paper is aged and shows some wear.

Bambola - Falso " S. Alto m



Bambolè e Fièro" S. Tenor

Handwritten musical notation on a single staff, starting with a treble clef, a key signature of one flat, and a 4/4 time signature. The music consists of a series of eighth and sixteenth notes, with a repeat sign and a first ending bracket above the staff.

Handwritten musical notation on a single staff, continuing the melody with eighth and sixteenth notes and a repeat sign.

Handwritten musical notation on a single staff, featuring a first ending bracket labeled "120" and a second ending bracket labeled "220".

Handwritten musical notation on a single staff, showing a continuation of the melodic line with eighth notes.

Handwritten musical notation on a single staff, continuing the piece with eighth and sixteenth notes.

Handwritten musical notation on a single staff, featuring a repeat sign and eighth notes.

Handwritten musical notation on a single staff, showing a melodic phrase with eighth notes and a repeat sign.

Handwritten musical notation on a single staff, continuing the melody with eighth notes and a repeat sign.

Handwritten musical notation on a single staff, ending with a double bar line, a key signature change to one sharp, and the word "Fin".

Sanhole - Trêvo " 1<sup>o</sup> Trompa

Handwritten musical notation on a five-line staff. It begins with a treble clef, a 2/4 time signature, and a key signature of one sharp (F#). The notation consists of a series of rhythmic figures, primarily eighth and sixteenth notes, with some rests.

Handwritten musical notation on a five-line staff. It features a first ending bracket labeled "1<sup>a</sup>" and a second ending bracket labeled "2<sup>a</sup>". The notation continues with rhythmic patterns similar to the previous staff.

Handwritten musical notation on a five-line staff, continuing the rhythmic sequence with eighth and sixteenth notes.

Handwritten musical notation on a five-line staff, showing further development of the rhythmic motif.

Handwritten musical notation on a five-line staff, maintaining the rhythmic structure.

Handwritten musical notation on a five-line staff. It includes a dynamic marking "cresc." (crescendo) and a key signature change to two sharps (F# and C#).

Handwritten musical notation on a five-line staff. It features a first ending bracket labeled "1<sup>a</sup>" and a second ending bracket labeled "2<sup>a</sup>". The notation concludes with a double bar line and the word "coda" written below the staff.



Bambole = Trevo II<sup>o</sup> Tropa

Handwritten musical notation on a five-line staff. It begins with a treble clef, a key signature of one sharp (F#), and a 2/4 time signature. The music consists of a series of eighth and sixteenth notes, with a double bar line and repeat sign after the first measure.

Handwritten musical notation on a five-line staff. It continues the melody from the previous staff, featuring eighth and sixteenth notes. There are two double bar lines with repeat signs, and a key signature change to one sharp (F#) is indicated above the staff.

Handwritten musical notation on a five-line staff. The melody continues with eighth and sixteenth notes. A double bar line with a repeat sign is present at the end of the staff.

Handwritten musical notation on a five-line staff. The melody continues with eighth and sixteenth notes. A double bar line with a repeat sign is present at the end of the staff.

Handwritten musical notation on a five-line staff. The melody continues with eighth and sixteenth notes. A double bar line with a repeat sign is present at the end of the staff.

Handwritten musical notation on a five-line staff. It features a key signature change to one sharp (F#) and a "Coda" section. The notation includes eighth and sixteenth notes, with a double bar line and repeat sign. The word "Coda" is written above the staff.

Handwritten musical notation on a five-line staff. It begins with a treble clef, a key signature of one sharp (F#), and a 2/4 time signature. The notation includes eighth and sixteenth notes, with a double bar line and repeat sign. The word "Coda" is written above the staff.



Bambolè - Trèvo II<sup>o</sup> Tronbone

Handwritten musical notation on a five-line staff. It begins with a treble clef, a key signature of two flats (B-flat and E-flat), and a 2/4 time signature. The notation includes a double bar line with a repeat sign, followed by several measures of music featuring eighth and sixteenth notes.

Handwritten musical notation on a five-line staff. It starts with a double bar line, followed by measures containing eighth and sixteenth notes. There are some markings above the staff, possibly indicating dynamics or articulation.

Handwritten musical notation on a five-line staff. It begins with a double bar line and contains several measures of music with eighth and sixteenth notes.

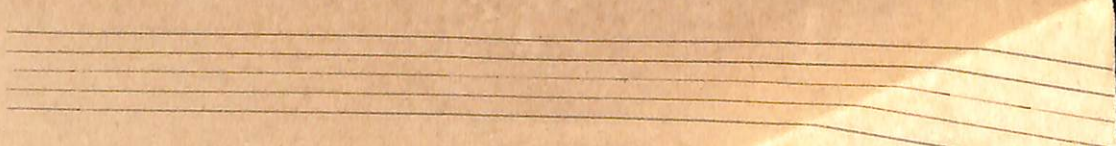
Handwritten musical notation on a five-line staff. It starts with a double bar line and includes measures with eighth and sixteenth notes. There are some markings above the staff.

Handwritten musical notation on a five-line staff. It begins with a double bar line and contains several measures of music with eighth and sixteenth notes.

Handwritten musical notation on a five-line staff. It starts with a double bar line and includes measures with eighth and sixteenth notes. There are some markings above the staff.

Handwritten musical notation on a five-line staff. It begins with a double bar line and contains several measures of music with eighth and sixteenth notes. There are some markings above the staff.

Handwritten musical notation on a five-line staff. It starts with a double bar line and includes measures with eighth and sixteenth notes. There are some markings above the staff.



# Bambolè - Frèvo o Bamardino

A handwritten musical score on aged paper, consisting of ten staves. The notation is in a single system, likely for a single melodic line. The first staff begins with a treble clef, a key signature of one flat (B-flat), and a 2/4 time signature. The music is characterized by frequent beamed eighth and sixteenth notes, often with slurs. There are several dynamic markings: 'cresc.' (crescendo) appears above the first staff, and 'cresc.' and 'cresc. molto' are written below the final two staves. The notation includes various ornaments and flourishes, such as grace notes and trills. The paper shows signs of age, including some staining and a hole on the left edge.



Bambolè - Fienzo - Tuba mi

Handwritten musical notation on a five-line staff. It begins with a treble clef and a 2/4 time signature. The first measure contains a whole rest. The piece starts with a key signature of one sharp (F#) and a common time signature (C). The notation consists of eighth and sixteenth notes, with some notes beamed together. There are repeat signs and a first ending bracket above the staff.

Handwritten musical notation on a five-line staff. It continues the piece with eighth and sixteenth notes. A first ending bracket is present above the staff, with a '2' written below it. The key signature remains one sharp (F#).

Handwritten musical notation on a five-line staff. The notation continues with eighth and sixteenth notes. The key signature changes to two sharps (F# and C#) in the middle of the staff.

Handwritten musical notation on a five-line staff. The notation continues with eighth and sixteenth notes. The key signature remains two sharps (F# and C#).

Handwritten musical notation on a five-line staff. The notation continues with eighth and sixteenth notes. The key signature remains two sharps (F# and C#).

Handwritten musical notation on a five-line staff. The notation continues with eighth and sixteenth notes. The key signature remains two sharps (F# and C#). A 'coda' marking is visible above the staff.

Handwritten musical notation on a five-line staff. The notation continues with eighth and sixteenth notes. The key signature remains two sharps (F# and C#). A 'coda' marking is visible above the staff.

