

BRASIL

1ª CLARINETA

Handwritten musical notation for the first staff. It begins with a treble clef, a key signature of one flat (B-flat), and a time signature of 2/4. The notation consists of several measures of music, primarily using eighth and sixteenth notes, with various rests and accidentals. Above the staff, there are several groups of notes with a '7' above them, likely indicating a fingering or a specific articulation. The piece ends with a double bar line and a final note.

Handwritten musical notation for the second staff. It starts with a treble clef. The notation features a series of eighth and sixteenth notes, with some notes beamed together. There are several rests and accidentals throughout the staff. The piece concludes with a double bar line and a final note.

Handwritten musical notation for the third staff. It begins with a treble clef. The notation is composed of eighth and sixteenth notes, with some notes beamed together. There are several rests and accidentals. Above the staff, there are several groups of notes with a '7' above them. The piece ends with a double bar line and a final note.

Handwritten musical notation for the fourth staff. It starts with a treble clef. The notation features a series of eighth and sixteenth notes, with some notes beamed together. There are several rests and accidentals. Above the staff, there are several groups of notes with a '7' above them. The piece ends with a double bar line and a final note.

Handwritten musical notation for the fifth staff. It begins with a treble clef. The notation features a series of eighth and sixteenth notes, with some notes beamed together. There are several rests and accidentals. Above the staff, there are several groups of notes with a '7' above them. The piece ends with a double bar line and a final note.

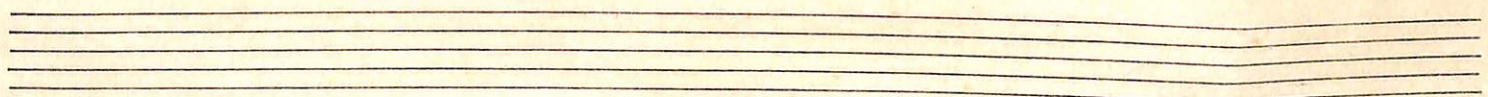
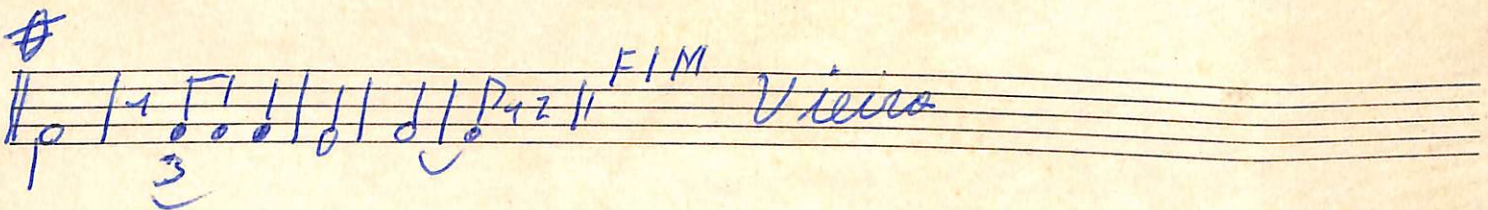
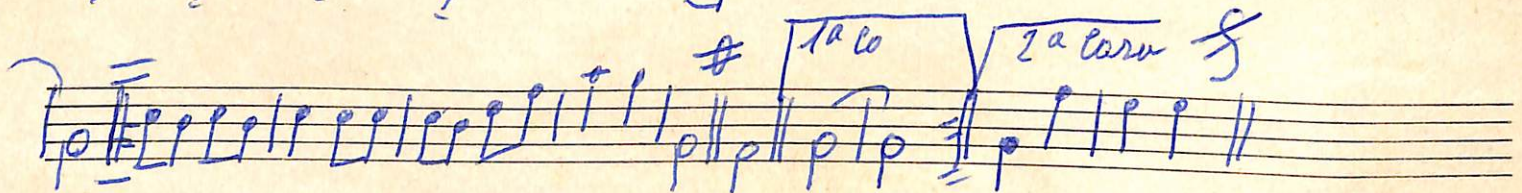
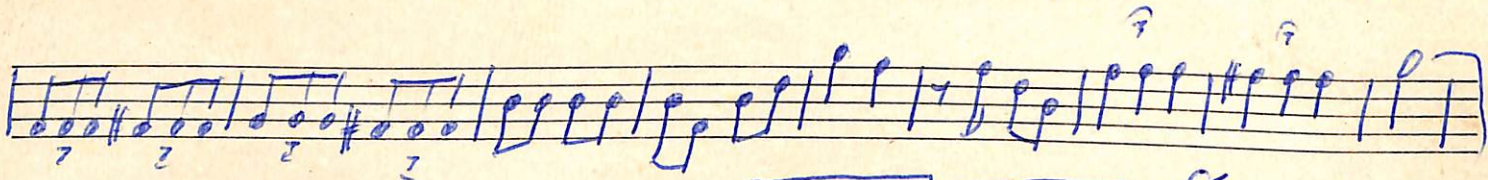
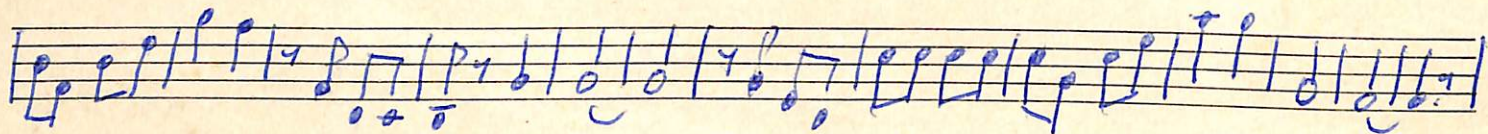
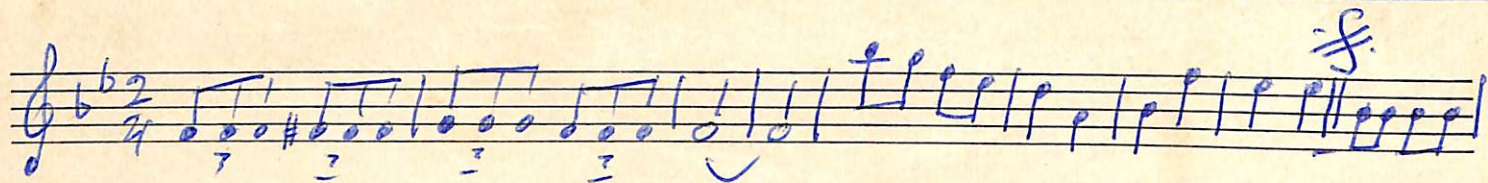
Four empty musical staves at the bottom of the page, consisting of five lines each.

BRASIL

10 Alto

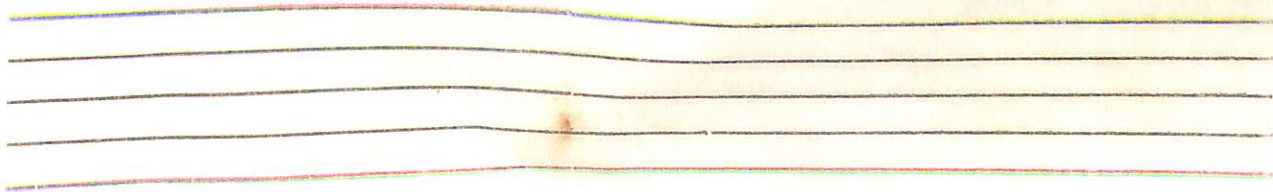
BRASIL

3^o Alto



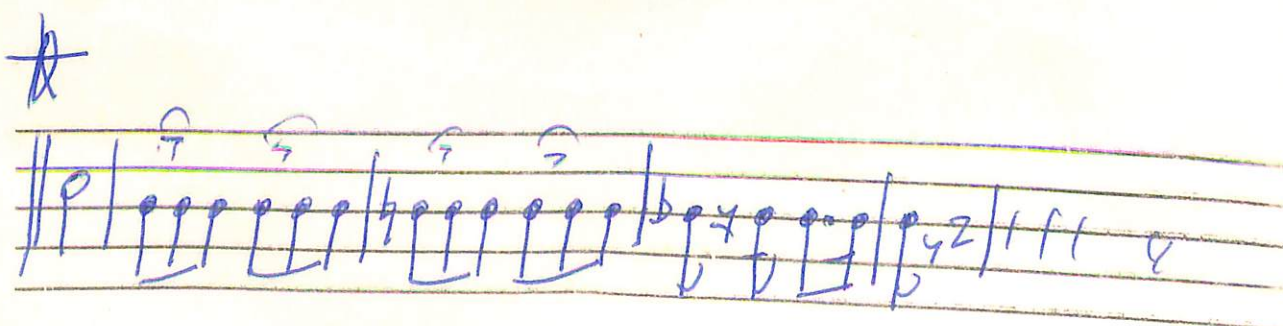
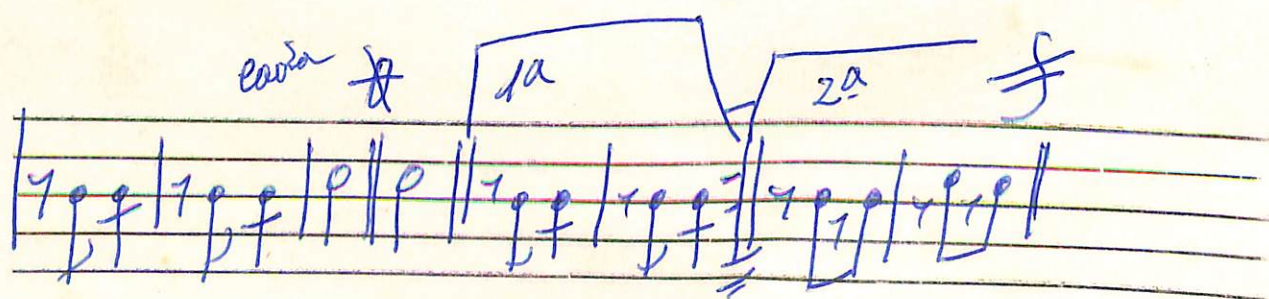
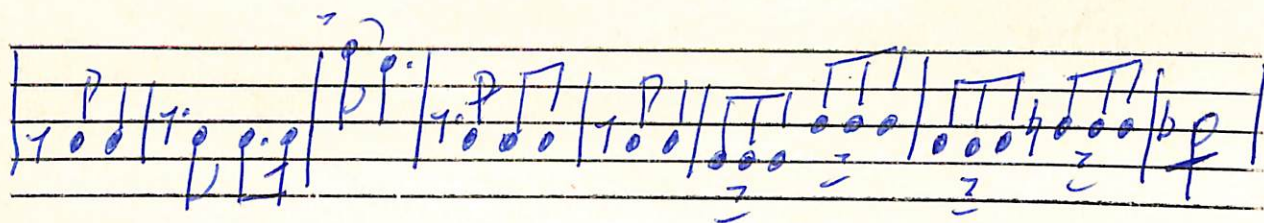
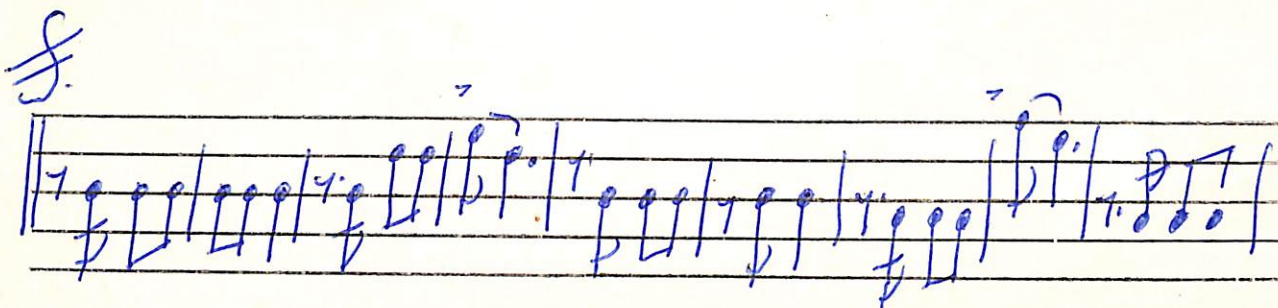
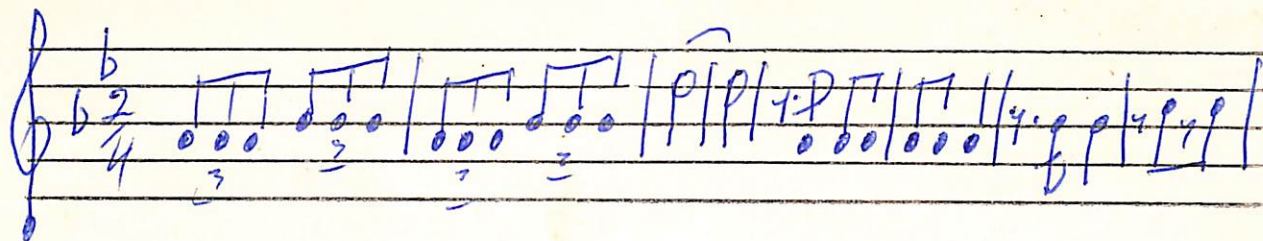
BRASIL

S. TENSOR



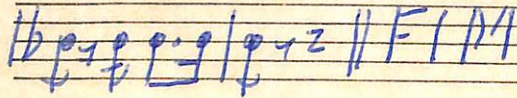
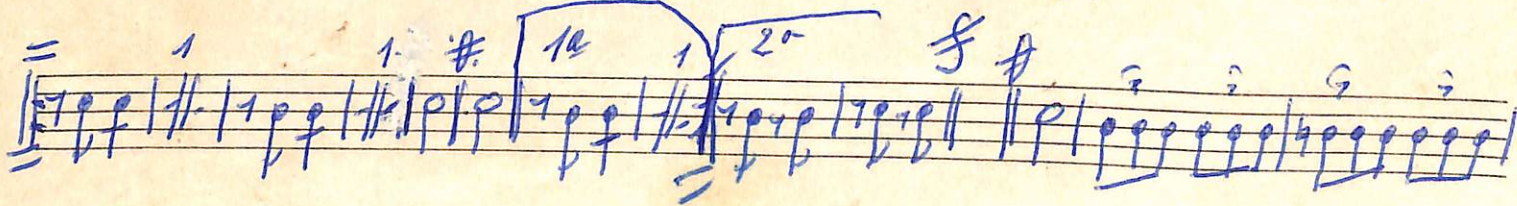
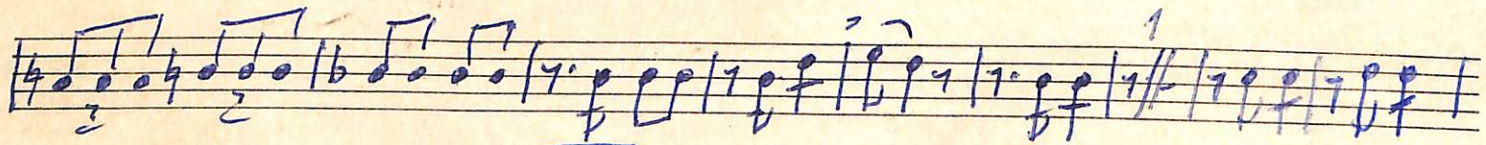
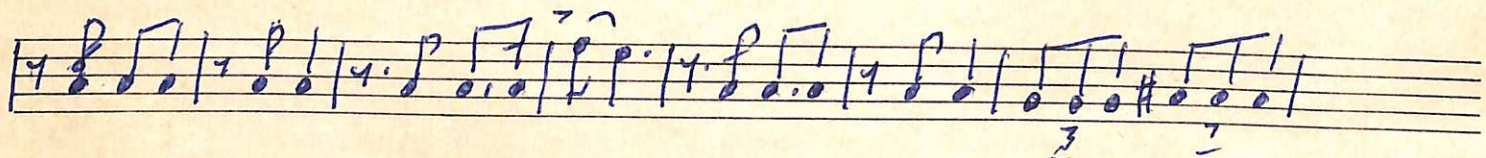
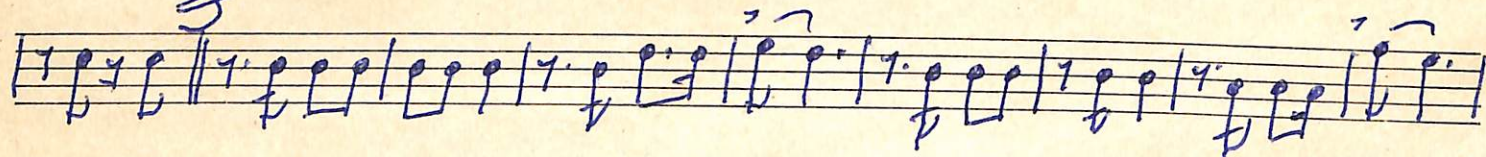
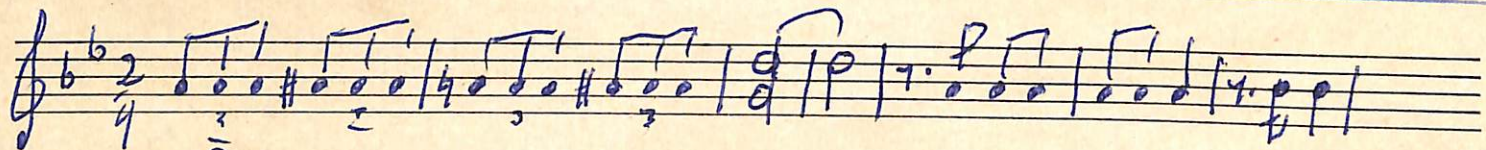
BRASIL

1ª TROMPA



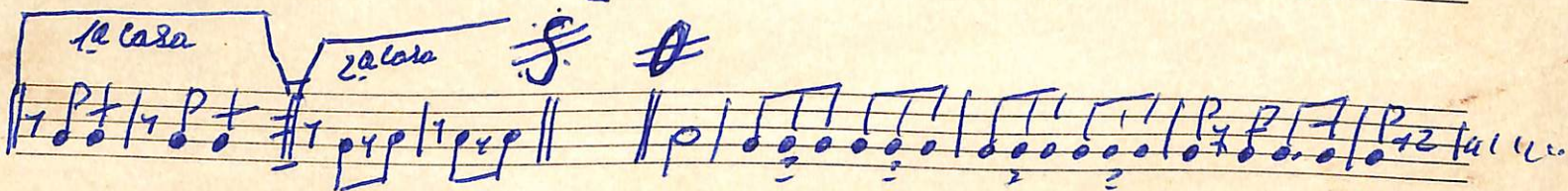
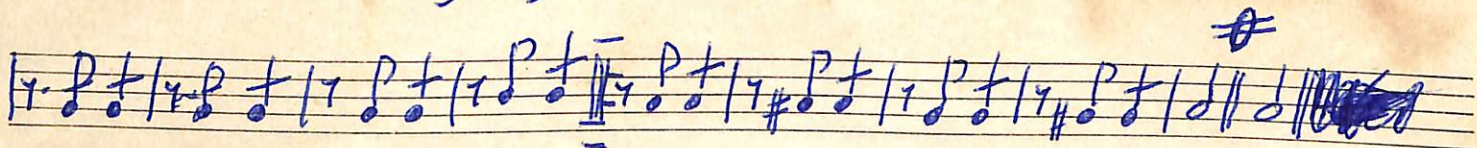
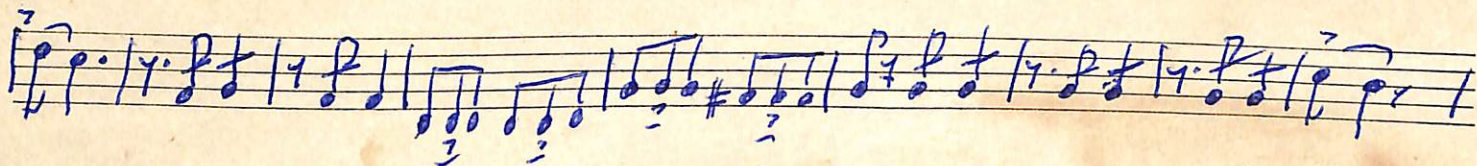
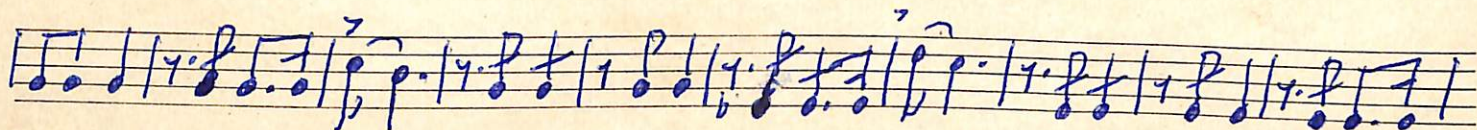
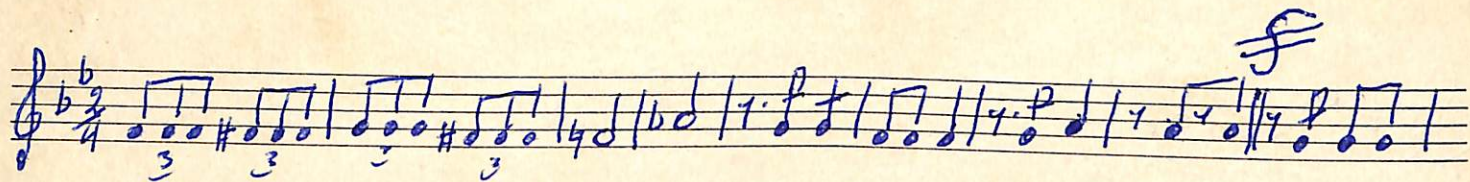
BRASIL

1^o TROMPA



BRASIL

2^a TROMBA



BRASIL

3ª TROMPA

Handwritten musical score for 3rd Trumpet, titled "BRASIL". The score is written on five staves in G major (one sharp) and 4/4 time. It includes various musical notations such as notes, rests, dynamics (p), and articulation marks (accents, staccato). The score is divided into sections, with the first section ending with a double bar line and a repeat sign. The second section is marked "1.ª Casa" and "2.ª casa" with a bracket. The score concludes with the word "FIM" and a final double bar line.

1.ª Casa

2.ª casa

FIM

BRASIL

1^o PISTONS

Musical notation for the first staff, featuring a treble clef, a key signature of two flats (B-flat and E-flat), and a 2/4 time signature. The notation includes rhythmic patterns with stems and beams, and a sequence of notes with various articulations such as accents and slurs.



Musical notation for the second staff, featuring a treble clef and a key signature of two flats. The notation includes rhythmic patterns with stems and beams, and a sequence of notes with various articulations such as accents and slurs.

Musical notation for the third staff, featuring a treble clef and a key signature of two flats. The notation includes rhythmic patterns with stems and beams, and a sequence of notes with various articulations such as accents and slurs.

Musical notation for the fourth staff, featuring a bass clef and a key signature of two flats. The notation includes rhythmic patterns with stems and beams, and a sequence of notes with various articulations such as accents and slurs.

Musical notation for the fifth staff, featuring a treble clef and a key signature of two flats. The notation includes rhythmic patterns with stems and beams, and a sequence of notes with various articulations such as accents and slurs. It includes markings for dynamics: *1^o con* and *2^o*.

Musical notation for the sixth staff, featuring a treble clef and a key signature of two flats. The notation includes rhythmic patterns with stems and beams, and a sequence of notes with various articulations such as accents and slurs. It includes markings for dynamics: *1^o* and *2^o*.

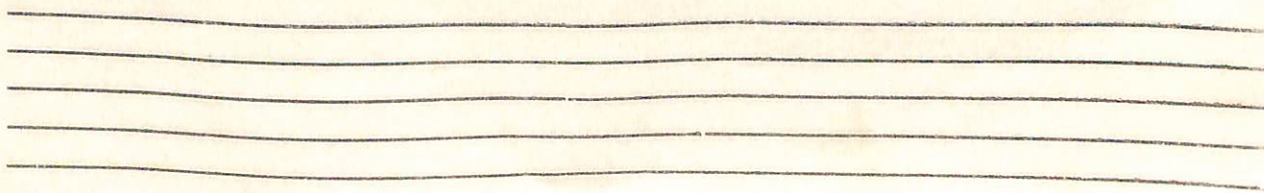
BRASIL

TROMBONE Si^b

1^a casa

2^a casa

FIM



BRASIL

1^o TROMBONE

Handwritten musical score for 1^o Trombone, titled "BRASIL". The score is written on five staves. The first staff is in bass clef with a key signature of two flats (B-flat, E-flat) and a time signature of 2/4. The second staff is in treble clef. The third staff is in bass clef. The fourth staff is in treble clef. The fifth staff is in bass clef. The music features various rhythmic patterns, including eighth and sixteenth notes, and rests. There are several dynamic markings such as *f* (forte) and *z* (zestoso). A double bar line with repeat dots is present in the fourth staff. The score concludes with a double bar line and the letters "FIM" in the fifth staff.

BRASIL

2. TROMBONE

Handwritten musical notation for the first system. It features a treble clef, a key signature of two flats (B-flat and E-flat), and a 2/4 time signature. The notation includes a series of eighth notes with slurs and accents, followed by a measure with a whole note and a final measure with a half note.

Handwritten musical notation for the second system, starting with a forte dynamic marking (**f**). It consists of a sequence of eighth notes with various slurs and accents, ending with a measure containing a half note.

Handwritten musical notation for the third system, featuring eighth notes with slurs and accents, and a measure with a half note.

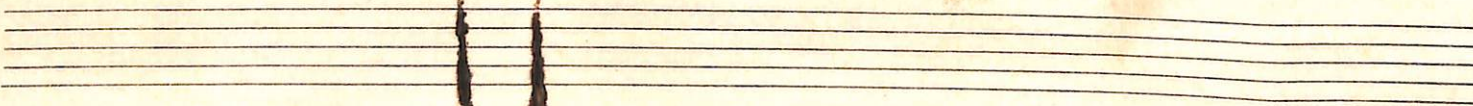
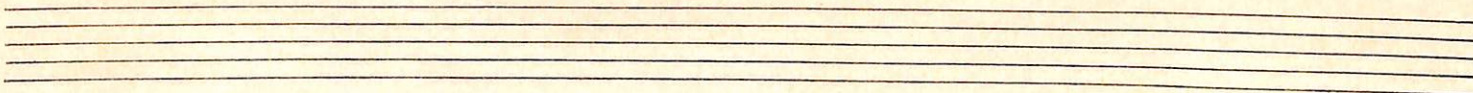
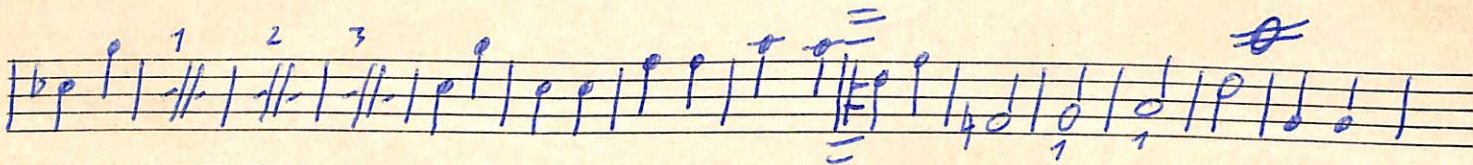
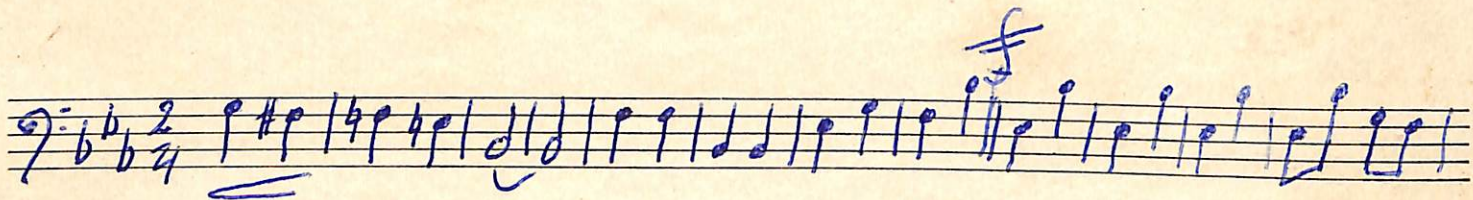
Handwritten musical notation for the fourth system, including eighth notes with slurs and accents, and a measure with a half note.

Handwritten musical notation for the fifth system, which includes first and second endings. The first ending is marked "1a" and the second ending is marked "2a". The notation includes eighth notes with slurs and accents, and a measure with a half note.

Handwritten musical notation for the sixth system, consisting of a few notes with slurs and accents, and a measure with a half note.

BRASIL

TUBA S'6



BRASIL

TUBA MIB

Handwritten musical notation on a five-line staff. It begins with a treble clef, a key signature of one flat (Bb), and a 2/4 time signature. The notation includes quarter notes, eighth notes, and a pair of beamed eighth notes. There are several accidentals (sharps and flats) and a fermata over a note in the second measure.

Handwritten musical notation on a five-line staff. It starts with a treble clef. The notation consists of a sequence of quarter and eighth notes with various accidentals.

Handwritten musical notation on a five-line staff. It features quarter notes and eighth notes with accidentals. The final part of the staff shows three measures with a double bar line and the numbers 1, 2, and 3 written above them, indicating a first ending.

Handwritten musical notation on a five-line staff. It includes quarter notes, eighth notes, and a pair of beamed eighth notes. There are several accidentals and a box around the final two notes of the staff.

Handwritten musical notation on a five-line staff. It begins with the text "20 case" above the staff. The notation includes quarter notes, eighth notes, and a pair of beamed eighth notes. There are several accidentals and a double bar line near the end.